

1701 16TH STREET NW, UNIT 109, WASHINGTON, DC

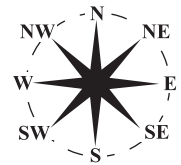
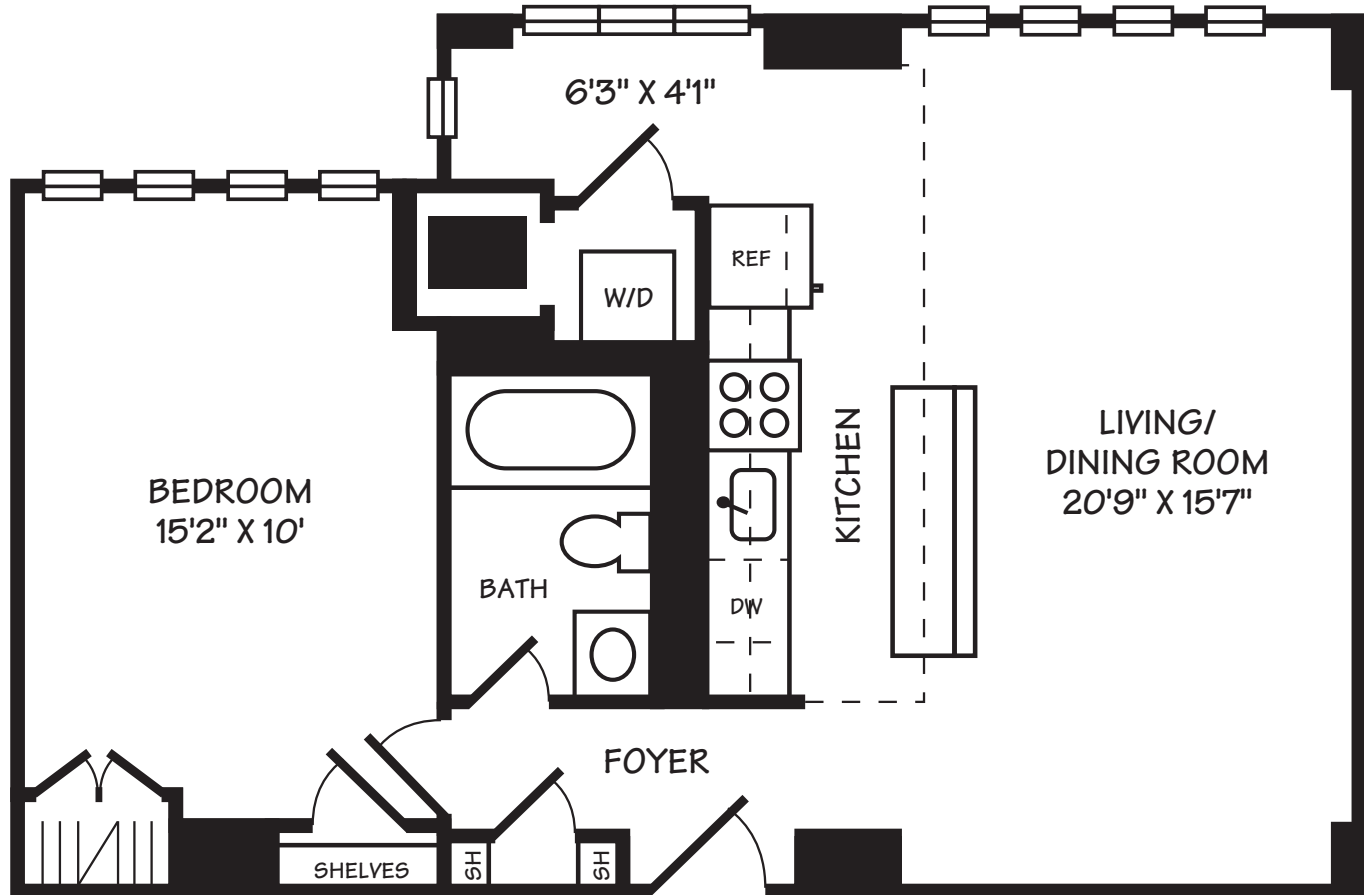
©2021 HRL PARTNERS – HRYNIEWICKI, RACKLIFFE, LEARY

WWW.INTERIORFOOTPRINTS.COM

ALL ILLUSTRATIONS, DIMENSIONS AND SQUARE FOOTAGE ESTIMATES ARE APPROXIMATE AND MAY VARY FROM ACTUAL STRUCTURE. DIMENSIONS HAVE BEEN ROUNDED.



ESTIMATED SQUARE FOOTAGE: 700 (700)



UNIT 109  
10' CEILING